

## Mediterranean Coastal Zone Information Map

The on-line Google-Earth map contains information about::

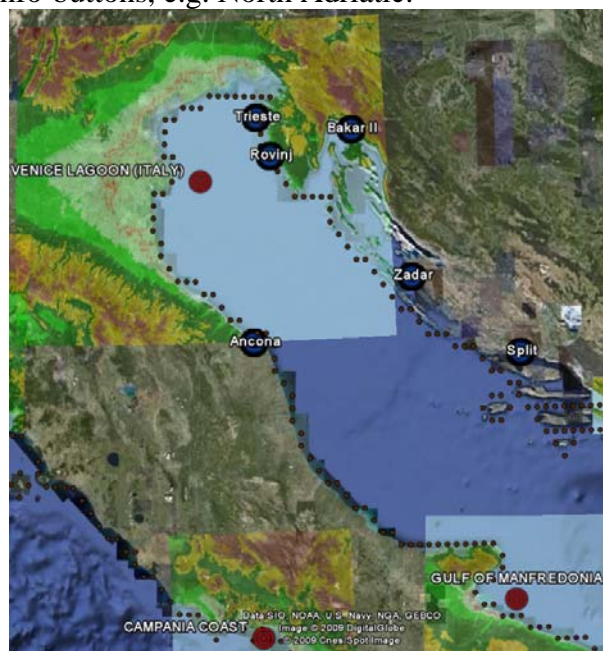
- In-situ sea level heights (SLH) in specific coastal areas around the Mediterranean Sea during the period 2000-2004
- Sea level pressure (SLP) diagrams for the same coastal areas
- Correlation diagrams between sea level pressures and the respective sea level diagrams
- Modeled sea level maximum and mean heights for the entire coastline for the period 2000-2004
- Overtopping rate of specific heights (10cm, 20cm,...,200cm) for the entire coastline
- In risk of inundation coastal areas and their respective areas (Km<sup>2</sup>) and coastline length (Km)


The map below provides on-line all the above information

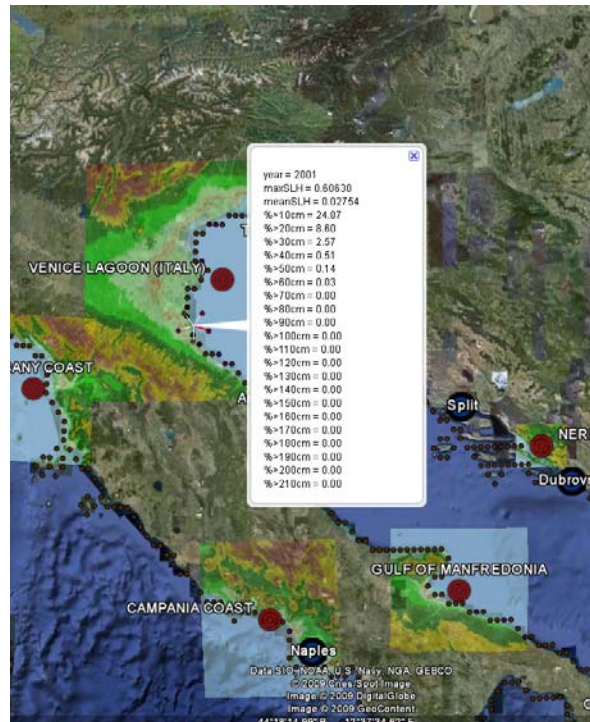




The purposed steps for easy-access are:

1. Zoom in the area of interested in order to have a better view and access of the respective info-buttons, e.g. North Adriatic.



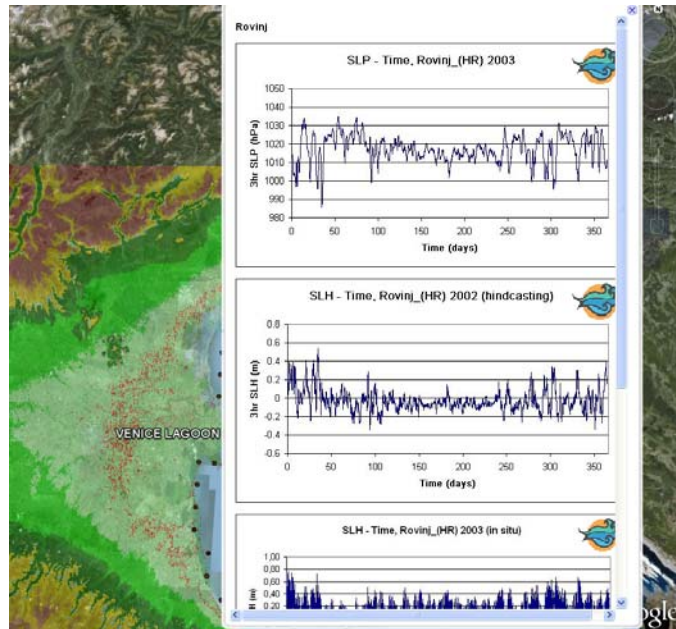
- For modeled SLH information and overtopping rates click any of the  buttons along the coastline. Five alternative choices are provided for each year for the period 2000-2004.



- For SLH and SLP diagrams click any of the  buttons. For each  bottom 5 additional choices are provided regarding the 5 years of the study period.



- Each one of these buttons provides the following information:
  - 3-hourly SLP diagrams for each year
  - 3-hourly modeled SLH diagrams for each year
  - In-situ 3-hourly SLH diagrams for each year
  - SLH (in situ) – SLP correlation diagrams for each year



5. The area affected by sea level rise of 1m, is presented with red spots (●). For each of these coastal areas, the ● bottom provides information such as the potential inundation area (km<sup>2</sup>) and the respective coastline length (km).

